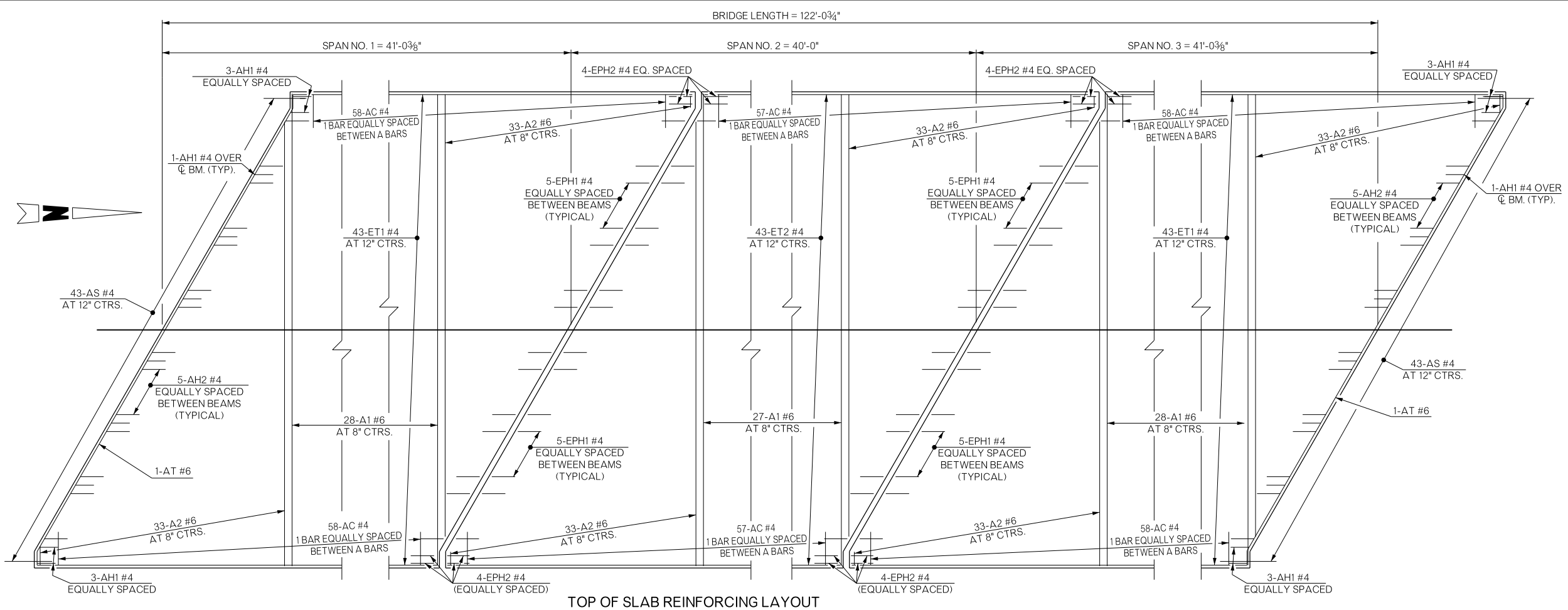
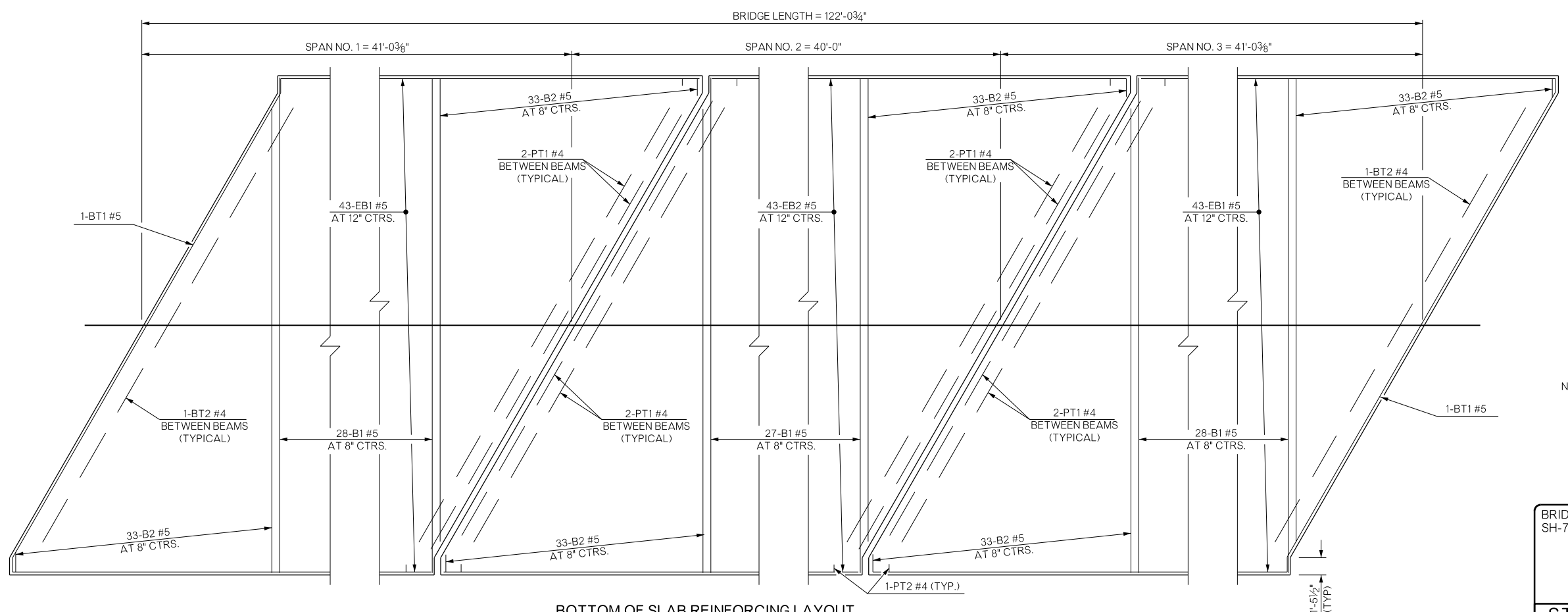


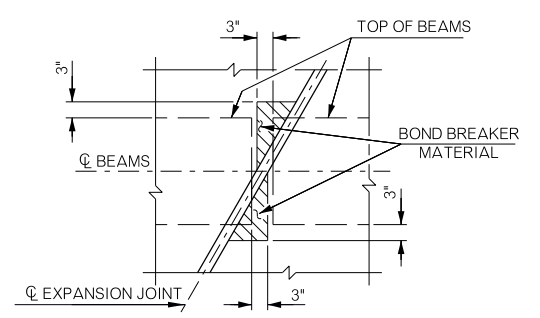
REVISIONS		
REV. NO.	DESCRIPTION	DATE



TOP OF SLAB REINFORCING LAYOUT



BOTTOM OF SLAB REINFORCING LAYOUT



DETAIL OF BOND BREAK AT BEAM CORNER

NOTE: WHERE THE TOP CORNER OF BEAM PROJECTS UNDER THE SLAB OF THE ADJACENT SPAN, A MINIMUM OF 1" CLEARANCE BETWEEN THE TOP OF BEAM AND THE BOTTOM OF SLAB SHALL BE PROVIDED IN THE HATCHED AREAS SHOWN ABOVE. 1" THICK EXPANSION MATERIAL SHALL BE USED AS A BOND BREAKER.

BRIDGE "A" SH-78 OVER CHUCKWA CREEK	BRYAN COUNTY	Design	CJO	6/15
SUPERSTRUCTURE DETAILS (SHEET 2 OF 3)		Detail	DPG	8/15
		Check	TEE	9/15
STATE OF OKLAHOMA		DEPARTMENT OF TRANSPORTATION		
JOB/PIECE NO. 27912(04)		SHEET NO. B019		